

The Engine Shed, Rowlands Road, Summerseat, Bury

Fire Safety

Main smoke detection and alarm system to comply with BS5839 Pt1 1988 to at least on L3 standard and be to the complete satisfaction of the Local Authority.

Emergency exit signage to be provided at every doorway giving access to a means of escape in accordance with BS5499 Pt1 1984 and be to the complete satisfaction of the LA.

All escape routes and accommodation (including WC areas without a window) to have escape lighting to illuminate the route should the mains supply fail. All to BS5266 Pt1 1988 Code of Practice for the Emergency Lighting of Premises.

Equipment

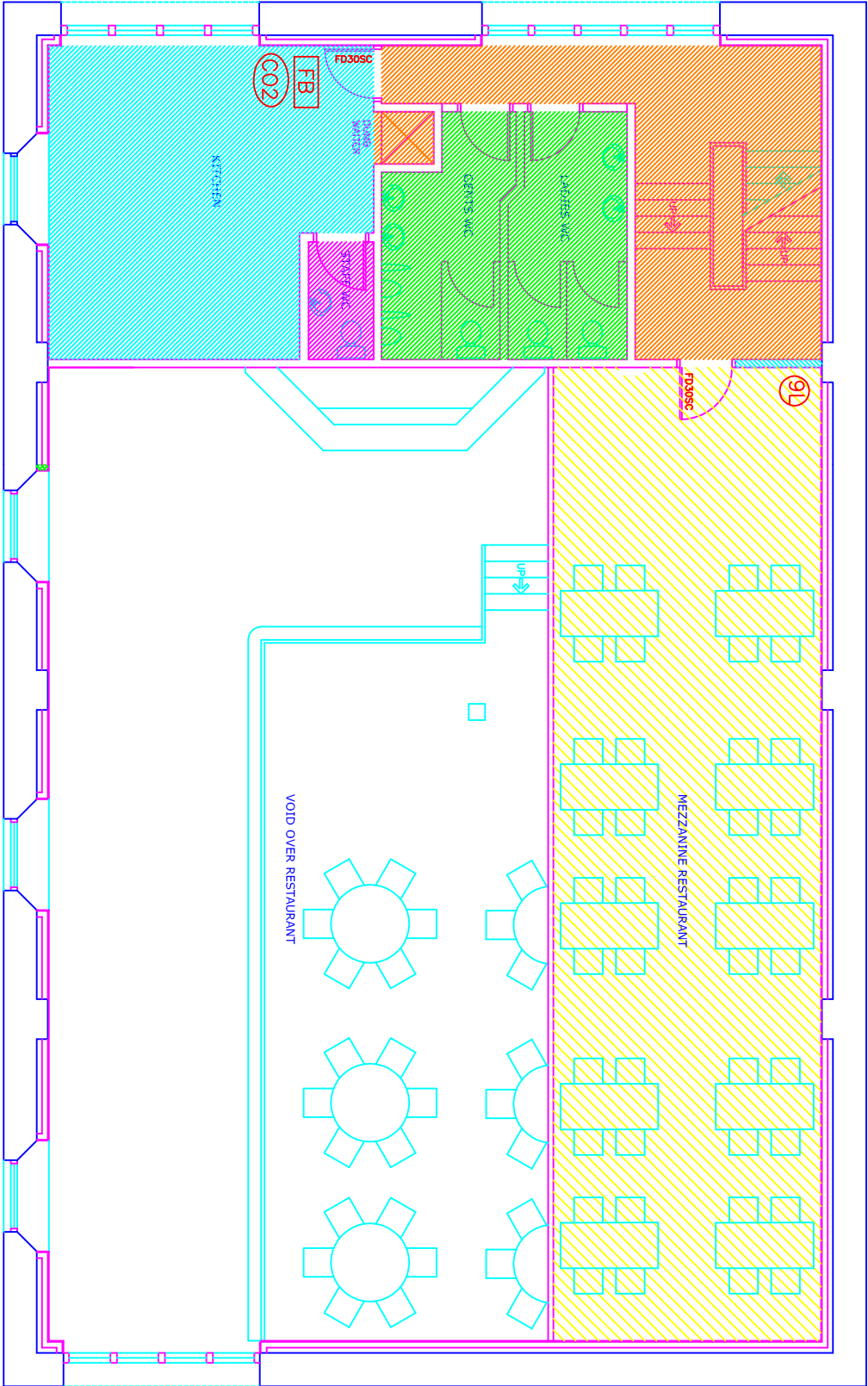
9 litre water fire extinguisher



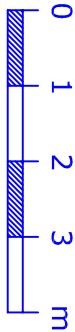
9 litre water fire extinguisher



Fire blanket



FIRST FLOOR PLAN  
Scale 1:100 at A4



Area of licensable activity

Kitchen area

Public Conveniences

Steps, stairs  
and dumb waiter

Staff Conveniences

Store

Fire Safety

Main smoke detection and alarm system to comply with BS5839 Pt1 1988 to at least on L3 standard and be to the complete satisfaction of the Local Authority.

Emergency exit signage to be provided at every doorway giving access to a means of escape in accordance with BS5499 Pt1 1984 and be to the complete satisfaction of the Local Authority.

All escape routes and accommodation (including WC areas without a window) to have escape lighting to illuminate the route should the mains supply fail. All to BS5266 Pt1 1988 Code of Practice for the Emergency Lighting of Premises.